



Exclusive Dental Products

About Us

RG's focus is to provide the dental community with the highest quality products at the best value.

RG takes the time to get to know YOU and your business.

Personable customer service and unique product offerings have made RG the vendor of choice for over a decade.

"PERFECT for my zirconia cases..."

Monticciolo Dentistry

"10Temp PMMA is a GAME CHANGER"

Dr. Marquez - Inspired Dental Las Vegas

"DEMANDS PERFECTION..."

"Well stocked inventory
& knowledge"

*Bill Connell - Paragon
Dental Studio*

"Confidence & happiness for
each patient visit..."

"RG is always
ready for us!"



"Digital denture
records captured in a
SINGLE VISIT..."

*Dr. Silvoy - Better
Dentistry*

"A RESPECTED vendor & partner"

Robert Shafer - BVDL

"There's
nowhere
better"

"RG fulfills the high aesthetic
demand..."

"Prompt service, DEPENDABLE & great
communication"

Josh Brooks - Columbia Basin Denture Care

Table of Contents

Wax	1
PEEK	2
Zirconia / Stains	3-4
Chrome Cobalt / Titanium	5
Non-Precious Metals	6
Accessories	7-8
PMMA	9-10
Artificial Denture Teeth	11
Prosthetics / Acrylics	12-13
Milling Tools	14
Digital Dentures	15-16

CAD/CAM Wax Discs

RG's Wax options are versatile and easy to use with unique flexibility which allows the crowns to adapt flawlessly to framework.

White Wax

- Perfect for aesthetic diagnostic cases
- Semi-translucent white calibration wax
- 98 & 100mm options

Beige Wax

- Burns out clean with no residue
- Easy to carve and modify
- Easy to cast and press
- 98 & 100mm options

Brown Wax

- Perfect for designing and milling porcelain fused to metal crowns and bridges
- Burns out clean with no residue
- Easy to carve and modify
- 95 & 98mm options



PEEK BioSolution®

PEEK (PolyEtherEtherKetone) is the medical-grade material solution for the biological balance of denture base and restorative material. Ideal combination of biocompatibility, definitive aesthetics and maximum loading capacity.

- Human bone-like elasticity and homogeneous crystallization
- Permanent dental restoration (wear resistant)
- High flexural strength and light weight
- Strong mechanical fixation
- White and A2/B2 Shades
- Anti-allergenic
- Sterilizable
- Rx only!

INDICATIONS:

- Telescopic primary and secondary crowns and framework
- Secondary bar structures
- Bridge substructures
- Tertiary constructions
- Crowns and bridges
- Crown coping

Elasticity/Flexural Modulus	5100 MPa
Flexural Strength	170 MPa
Vickers Hardness	32 HV 0.2
Water Absorption	0.4%
Fracture Toughness	4.7 MPa x \sqrt{m}



Health
Canada



Zirconia

European grade ceramics. Unparalleled aesthetic appeal. From single crowns to long span bridges, Kerox Dental offers the most impressive zirconia on the market and is backed by a 100-year warranty.



Stains

Core staining: Stains, Effects and Markers for pre-sintered crowns and multi-unit bridges.

- Water based and alcohol free – no evaporation
- Available in all 16 Vita Shades; 100ml bottles
- Optimized liquids for dipping or painting with Ultra High Translucent, High Translucent and High Strength zirconias

HS	HT	HTML Multilayer	UTML Multilayer	UHT NEW
35% Translucency	45% Translucency	45% Translucency	49% Translucency	49% Translucency
1,443 MPa	1,350 MPa	1,389 MPa	746 MPa	1,175 MPa
Up to 16 Units	Up to 16 Units	Up to 16 Units	Up to 4 Units	Up to 16 Units
5 Shades	6 Shades	5 Shades	5 Shades	6 Shades
71, 95, 98, 100	71, 95, 98, 100	71, 95, 98	71, 95, 98	71, 95, 98, 100
10, 12, 14, 16, 18, 20, 25	10, 12, 14, 16, 18, 20, 25	14 & 20	14 & 20	10, 12, 14, 16, 18, 20, 25



IDENTCERAM

Biocompatible. Nickel and beryllium free. Highest tensile strength available. Corrosion resistant with a moderate co-efficient of thermal expansion. Works well with most porcelain systems. Available in heights 10 to 25mm.

	CoCr	Ti
Tensile Strength (MPa)	525	825
Yield Strength (MPa)	375	760
Hardness Vickers	285	310
Density (g/cm³)	8.55	4.4
Elongation (%)	14.7	8
CTE	14.5	12.4



Grade V Titanium

Material of choice for implant abutments, bars, Hader bars, hybrid bars and frames, copings, as well as full crowns and bridges.

Type 4 Chrome Cobalt

Ideal for crowns & bridges, one-piece abutments, implant retained structures and optimal for laser welding.



CASTING BONDING ALLOYS FIXED					PARTIAL DENTURE ALLOYS REMOVABLE			
KERA GEN	KERA C	MAIN METALL	KERA N	KERA NH	ROBUR 400	DENTIUM	TENER 350	TENER IT

Type	4	5	5	3	3	5	5	5	5
Yield Strength (MPa)	375	575	570	340	380	705	590	>500	555
Tensile Strength (MPa)	525	750	725	550	560	930	850	800	745
Density	8.5	8.4	8.7	8.4	8.2	8.3	8.2	8.3	8.3
HV	285	350	370	185	240	420	460	<450	330
CTE	14.5	14.1	14.0	14.1	14.0	n/a	n/a	n/a	n/a
CoCr Based	✓	✓	✓			✓	✓	✓	✓
Ni Based				✓	✓				



Ultra Fine Diamond Polishing Paste

- Splatter-proof
- The perfect finishing touch for any fixed or removable restoration
- Distributes evenly and smoothly; NO greasy residue
- Used with PMMA, acrylic, zirconia, porcelain, and all metals



Sintering Beads & Stackable Trays

- Controls shrinkage rate and provides support during sintering process
- 2mm, smooth finish prevents jamming/ wedging between bridge units



DentMill Adapter Rings

- Metal adapter rings allow technicians whose mill requires a 100mm disc with step ring to mill 98mm material
- Reusable and Easy to use



BD Impress®

- Thermoplastic, moldable & biocompatible material for immediate impressions
- 5 minute bench set or immediate set in cold water
- No mixing or chemical polymerization
- Functional impressions, border molding and quick fabrication of base plates
- Re-meltable
- Odorless & tasteless



Multi-Layer PMMA

10
TEMP

- Offered in 5 and 10 gradient layers of evenly distributed color from cervical to incisal to create a natural, highly aesthetic appearance
- Approved for short or long term temporaries
- Biocompatible
- 71, 95, 98 & 100mm options

"This PMMA gives me everything I look for in a restorative material. The shades and color blending are as impressive as they are reliable. The material itself handles beautifully. Rarely have I seen a significant decrease in labor coincide with such a dramatic elevation in quality."

Jason G. - Tarrytown, NY

Monochromatic M-PM[®] High Translucent PMMA

- Filler & fiber free Organic Modified Polymer-Network (OMP-N[®])
- Regarded as the strongest, most dense, and tissue-friendly material on the market
- Long term use up to 3 years
- Abrasion, plaque, and stain resistant
- 95 & 98mm options



Available in all 16 Vita Shades plus 4 Bleach Shades



Health
Canada

Medical-Grade Clear PMMA

- Used for long term temporaries, orthodontic splints, bite splints, night guards, implant drilling templates, surgical stents, etc.
- Abrasion, plaque, and stain resistant
- 71, 95, 98 & 100mm options



"Before this PMMA, I had few shade choices for our Zirkonzahn mills. The extreme aesthetics, strength, and stain and abrasion resistant properties helped to dramatically increase and change my business! There's no turning back!

CAD/CAM Manager – Las Vegas, Nevada

Gingival-Shaded PMMA

- Pink shade range options
- Long term use for denture-based restorations
- Abrasion, plaque, and stain resistant
- 95, 98 & 100mm options



Works great with PCS for denture characterization by



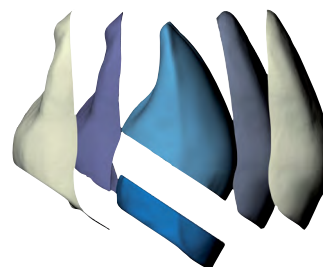
p. 12

artegral® Denture Teeth

- 100% German made premium denture solutions. artegral® denture teeth are constructed of filler & fiber free Organic Modified Polymer-Network (OMP-N®) which creates color stability, plaque resistance and high resistance to abrasion
- Can also be used as burnout teeth
- Over 800 combinations of forms and shades available
- Available in all 16 V classic shades + 4 bleach shades

5 Layer Anterior

- Hybrid and implant constructions
- Full and partial prosthetics
- Full bodied, like a natural tooth with life like layers
- Perfect light refraction



4 Layer Posterior

- Fully anatomical, cusp angle 25 degrees
- Full bodied, like a natural tooth
- Clear centric for natural and artificial antagonists
- Time-saving handling: basal shaped, integrated set-up aid
- Partial, complete, combined, and hybrid denture prosthetics



PSG®
Patented
Preventative Shift
Groove

"As the owner of a small dental laboratory, I appreciate the personalized service that I receive from RG. The artegral tooth line and Merz PCS are of the highest quality, allowing me to provide my customer with a better restoration"

Robert Hicks - Hicks Dental Lab

PCS

Cold-curing, intensively pigmented MMA (methylmethacrylate) based resin for highly customizable color characterization of the artificial gums for the most sophisticated aesthetic restorations. Achieve the perfect shade each time.

- 3 Standard Shades: Shell, Coral and Anemone (no pre-mixing needed)
- 4 Intensive Shades: Opal, Topaz, Ruby and Sapphire

Fast and efficient processing, easy to polish, color-stable with minimal polymer shrinkage.



Weropress® Cold-Curing Polymer & Monomer

Suitable for all indications and processes within the injection, press and pouring method due to its unique polymer and monomer formulation.

- Simple to measure powder-liquid system
- Colors are coordinated with all Merz Dental denture base materials
- Reliable, color-stable storage and processing
- High flexural strength tolerates large undercuts
- High plaque-resistance and excellent polishing features
- No post discoloration
- Biocompatibility tested & cadmium free



complete dentures



partial dentures



hybrid prostheses, cover dentures, combined dentures



model casting



repairs, additions



relining materials



bite appliances, shields

	pink	pink veined	H-pink	^{BD} Load pink	^{BD} Load dark pink	pink 3	clear	C34*	CS41**
100 g	REF 1020045	REF 1025014	REF 1020039	REF 1025034	REF 1020031	REF 1020032	REF 1020048	REF 1020046	REF 1020055
1000 g	REF 1020051	REF 1025024	REF 1020040	REF 1025035	REF 1020029	REF 1020030	REF 1020053	REF 1020054	REF 1020056
12 kg	REF 1020092	REF 1020093	-	-	-	-	-	REF 1020094	
100 ml	REF 1020047								
1000 ml	REF 1020086								

*dark pink-opaque, veined

**pink-bluish



shade tab Weropress® REF 1090209

Milling Tools

Superior milling tool strategies available for all dental mills.

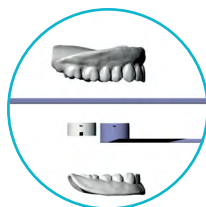
RG offers a variety of tools for roughing, semi-finishing, and finishing Wax, PMMA, Zirconia, or Non-Precious Metals.

- Guaranteed to outlast current tool life
- High precision
- True diamond grade coating
- 10,000 HV vs. competitor 2,000 HV

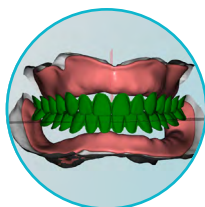


Baltic Denture System

Reduced time at the bench, predictable results, high material quality and reproducibility make this innovative concept the only choice for digital dentures.



BDKey® Set



BDCreator® PLUS Software



BDLoad®

BDKEY® SET

Choose your entry into the process of digital dentures:



2 APPOINTMENTS

2 APPOINTMENTS

BDImpress® p.8 for border molding and bite registrations

DENTAL PRACTICE	PATIENTS	DENTAL LAB
LESS CHAIR TIME	HIGH FITTING ACCURACY	EFFICIENCY / PROFITABILITY
SCANNED DATA = REPRODUCIBILITY	FEWER APPOINTMENTS	CUSTOMIZABLE DESIGN
IMPROVED PATIENT COMPLIANCE	PREDICTABLE MASTICATORY FUNCTION	REPRODUCIBLE RESULTS

BD CREATOR® PLUS SOFTWARE

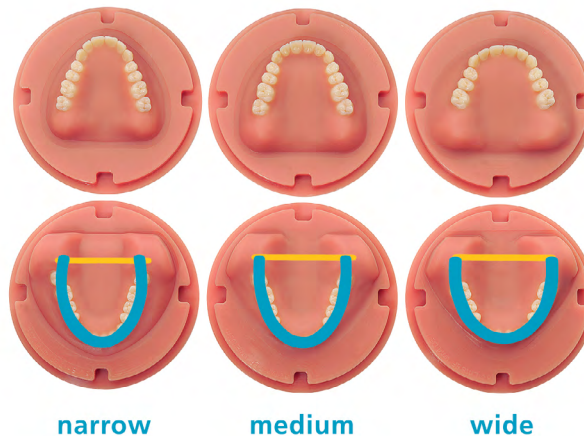
- An intuitive and efficient user interface
- Easily integrated into existing workflows
- Compliments most existing systems
- Rows of teeth automatically aligned
- Individually adaptable at any time during design



BD LOAD®

Available in small, medium and large with set ups to the 1st or 2nd molar.

- All 16 vita shades *plus* 4 bleach options
- Narrow, medium, or wide jaw widths
- Pink and dark pink gingival options



narrow

medium

wide

